



Hansa Class World & International Championships 2016

Incorporating
Hansa Class Dutch Championships 2016

3-9 June 2016

IJsselmeer off Medemblik (the Netherlands)

Organized by the Royal Yachtclub 'Hollandia' (RYH), in conjunction with the International Hansa Class Association (IHCA) and the Dutch Hansa Class Association (DHCA)

NOTICE OF RACE Version 2.1

1 RULES

- 1.1 The regatta will be governed by the rules as defined in *The Racing Rules of Sailing* (RRS).
- 1.2 For the Hansa Class Dutch Championships 2016 only: the 'Rules for Championships Sailing, Windsurfing and Kiteboarding' will apply.
- 1.3 All competitors shall wear a life jacket or other adequate personal floatation device while afloat. No Y flag shall be displayed. This changes rule 40 and the Part 4 preamble.
- 1.4 The sailing instructions may contain minor changes to the RRS.
- 1.5 If there is a conflict between languages the English text will take precedence.
- 1.6 **Liberty Class Rule C.5 Sailor Weight Equalisation shall apply**

2 ADVERTISING

Boats may be required to display the advertising chosen and supplied by the organizing authority.

3 ELIGIBILITY AND ENTRY

- 3.1 The regatta is open to all boats of the following Hansa Classes:
- Hansa 2.3 Single Person
 - Hansa 303 Single Person
 - Hansa 303 Two Person
 - Liberty Single Person
 - SKUD 18 Two person
- 3.2 Entry is open to competitors who are current financial members of their National Hansa Class association or the IHCA. **For competitors from countries where there is no National Hansa Class Association, membership of the IHCA can be acquired at registration.**
- 3.3 For all classes, the minimum number of entries required for a division to be valid is six (6) boats.
- 3.4 For Hansa 2.3 and Liberty servo boats, the minimum number of entries required for a sub-division to be valid is four (4) boats.
- 3.5 To be eligible for the Servo Championships, the helm and all sheets must be controlled by servo gear. Partial servo boats are deemed to be manual.
- 3.6 Eligible boats may enter by completing an online entry at the website www.2016HansaWorlds.com
- 3.7 Entries will be accepted until 3 May 2016. For entries before midnight on 31 December 2015, an 'Early Bird' entry fee will be applicable.
- 3.8 Late entries after 3 May 2016 may be accepted at the discretion of the Organizing Authority and shall incur a late entry fee of € 50.
- 3.9 A competitor who has his domicile in the Netherlands shall be a member of a Yacht Club or other body affiliated to the Royal Netherlands Watersport Association (RNWA) and shall have a the appropriate license. Competitors from other countries shall comply with RRS75.

4 CLASSIFICATION

ISAF classification requirements will not apply.

5 ENTRY FEES

- 5.1 The currency for all fees and bank transactions will be Euro.
- 5.2 Entries will only be valid and confirmed upon the transfer of the appropriate entry fees to the bank account, mentioned on the event website www.2016HansaWorlds.com

Class	Category	Early Bird	Normal entry	Late entry
Hansa 2.3	Single Person	€ 210	€ 250	€ 300
Hansa 2.3	Single Person servo	€ 210	€ 250	€ 300
Hansa 303	Single Person	€ 210	€ 250	€ 300
Hansa 303	Two Person	€ 310	€ 350	€ 400
Liberty	Single Person	€ 210	€ 250	€ 300
Liberty	Single Person servo	€ 210	€ 250	€ 300
SKUD 18	Two Person	€ 335	€ 375	€ 425

- 5.3 Competitors in a single person category who also compete in a two person category will receive a discount on their single person entry fee of 50% of the Normal entry fee.

RACING FORMAT

- 6.1 A total number of ten (10) races are scheduled.
 6.2 For each category, two races per day will be scheduled. However, at the discretion of the race committee, an additional race may be sailed on the same day.

7 SCHEDULE

- 7.1 The schedule of events is as follows:

Date	Time	Event
3 June 2016 Friday	10:00-17:00	Registration & Measurement
4 June 2016 Saturday	10:00-17:00	Registration & Measurement
4 June 2016 Saturday	17:00	Opening Ceremony
5 June 2016 Sunday	09:00	Skippers briefing
6 June 2016 Monday	19.30	Sailors Conference
7 June 2016 Tuesday	17.00	Social Program with presentations and Mid-event BBQ & Buffet
9 June 2016 Thursday	17.30	Prize-Giving & Closing with meal

- 7.2 The schedule of races is as follows:

Date	1st Warning Signal	Race	Category
Saturday 4 June 2016	14:00	Practice	All
Sunday 5 June 2016	11:00	Race day 1	Single person
Sunday 5 June 2016	14:00	Race day 1	Two person
Monday 6 June 2016	11:00	Race day 2	Two person
Monday 6 June 2016	14:00	Race day 2	Single person
Tuesday 7 June 2016	11:00	Race day 3	Single person
Tuesday 7 June 2016	14:00	Race day 3	Two person
Wednesday 8 June 2016	11:00	Race day 4	Two person
Wednesday 8 June 2016	14:00	Race day 4	Single person
Thursday 9 June 2016	10:00	Race day 5	Single person
Thursday 9 June 2016	13:00	Race day 5	Two person

- 7.3 Two races are scheduled for each morning and afternoon session with the subsequent race starting as soon as possible after the end of the previous race.
 7.4 On the last day of racing, except after a general recall or postponement during the starting procedure, no warning signal will be made after 15:00 hours.

8. MEASUREMENTS

- 8.1 Each boat shall be presented for measurement & inspection in accordance with the regatta schedule. Boats may be inspected at any time during the regatta.
 8.2 Sails must be marked in accordance with the current class rules, except that older sails with the Hansa insignia at the clew corner will be permitted. Hansa 2.3, 303 and Liberty

sails with the older 100mm high sail numbers are no longer permitted. The minimum is currently 175mm high for sail numbers and national sail letters in these classes. Sails must display the sail number and national letters of a boat registered in the competitor's country.

9 SAILING INSTRUCTIONS

The Sailing Instructions will be available at the race office upon registration and will be posted on the event website www.2016HansaWorlds.com

10 VENUE

10.1 Attachment A shows the location of the regatta harbor and the race office.

10.2 Attachment B shows the location of the racing area.

10.3 Attachment C shows the locations for boatramp, car/trailer/boat park, campsite etc.

11 THE COURSES

The trapezoid courses to be sailed will be detailed in the sailing instructions.

12 PENALTY SYSTEM

12.1 Rule 44.1 is changed so that the Two-Turns Penalty is replaced by the One-Turn Penalty.

12.2 Decisions of the International Jury will be final as provided in rule 70.5.

13 SCORING

13.1 Four races are required to be completed to constitute a series in each division.

13.2 When fewer than five races have been completed, a boat's series score will be the total of her race scores.

13.3 When five, six or seven races have been completed, a boat's series score will be the total of her race scores excluding her worst score.

13.4 When eight or more races have been completed, a boat's series score will be the total of her race scores excluding her two worst scores.

14 SUPPORT BOATS

14.1 All support boats shall be registered with the Organizing Authority and will be required to comply with local legislation and event support boat regulations. The Organizing Authority may refuse registrations and accept later registrations at their sole discretion.

14.2 The registrant of a support boat will be charged a non refundable fee of € 50. The fee includes craning (first and last day), use of the slipway, trailer parking and berthing in the harbor.

14.3 All support boats shall clearly display the three letter national code of their ISAF Member National Authority at all times while afloat. The minimum height for the letters shall be 150 mm and visible from both sides of the boat.

14.4 Support boats with team leaders, coaches and other support personnel shall stay outside area where boats are racing from the time of the starting sequence until all boats have finished or the race committee signals a postponement, general recall or abandonment. Support boats shall comply with any reasonable request from a regatta official.

15 BERTHING

Boats shall be kept in their assigned places in the boat park or in the harbor. **All Liberty and SKUD 18 class boats must be afloat by 19.00hrs on Saturday 4 June, 2016.**

16 HAUL-OUT RESTRICTIONS

Keel boats of the Liberty Class and SKUD 18 Class shall not be hauled out during the regatta except with and according to the terms of prior written permission of the race committee.

17 DIVING EQUIPMENT AND PLASTIC POOLS

Underwater breathing apparatus and plastic pools or their equivalent shall not be used around keel boats between the preparatory signal of their first race and the end of the regatta.

18 RADIO COMMUNICATION

Except with the prior written permission of the race committee or in an emergency, a boat shall neither make radio transmissions while racing nor receive radio communications not available to all boats. This restriction also applies to mobile telephones.

19 TROPHIES & PRIZES

Prizes will be awarded in the following divisions:

- Hansa 2.3 Single-Person World Champion
- Hansa 2.3 Servo International Champion
- Hansa 2.3 Dutch Champion
- Hansa 303 Single-Person International Champion
- Hansa 303 Single-Person Dutch Champion
- Hansa 303 Two-Person World Champions
- Hans 303 Two-Person Dutch Champion
- Liberty World Champion
- Liberty Servo International Champion
- Liberty Dutch Champion
- SKUD 18 International Champions

20 DISCLAIMER OF LIABILITY

20.1 Competitors participate in the regatta entirely at their own risk. See **RRS** rule 4, Decision to Race. The organizing authority and its officers, members and volunteers will not accept any liability for material damage or personal injury or death sustained in conjunction with or prior to, during, or after the regatta.

20.2 A competitor is recommended to have personal accident and health insurance that covers them while attending the regatta and whilst racing.

21 INSURANCE

Each participating boat shall be insured with valid third party liability insurance with a minimum cover of € 1.500.000 per event or the equivalent. **Dutch law is applicable.**

22 PHOTOGRAPHY CONSENT

By entering the Championship competitors accept that they may be photographed and/or videotaped participating in the race and/or using the regatta facilities and they consent to the taking of such images and to the use, re-use, publication and republication of such images in any media, in conjunction with the competitor's name or not, without compensation and without the competitor's approval of such images or any use thereof.

23 SAFETY

23.1 A mandatory tally system shall be used.

23.2 Boats not leaving the harbor for a day's race shall inform the race office prior to the start.

24 RACE OFFICE

The race office inside the ISC Medemblik will be open for registration from Friday 3 June 2016, 10:00 hours only.

Address:	Harbor:
Regatta Office ISC Medemblik	Regatta Center Medemblik
Vooroever 1 1671 SG Medemblik	
Phone +31 (0)227-570 305 E-mail: iscm@watersportverbond.nl	Please note: The phone number will only be monitored during the regatta.

The following items are for information only and do not form part of the Notice of Race.

25 TRAILER PARKING, DOCKING AND CARS

All participants shall park their boats and road-trailers on the premises of the harbor Regatta Center Medemblik. Cars shall be parked in the designated parking areas. No cars are allowed in the dinghy park. Please follow the beach master's and the harbor master's instructions at all times. **Attachement C is to be used as a guidance.**

26 HOUSING AND CAMPERS/CARAVANS

Regulations in the Netherlands prohibit sleeping in campers and caravans parked along public roads or in public car parks.

On the designated area on the premises of the harbor Regatta Center Medemblik, sleeping in caravans, tents or campers is allowed against a fee of **€ 19** per object per night, tourists tax will be paid to the City of Medemblik. The fee is payable at the race office upon registration.

27 ACCOMMODATION

27.1 Competitors shall make their own housing arrangements. A selection of accommodation can be found on the event website: www.2016HansaWorlds.com. Or by visiting the tourist information for Medemblik area www.vvvmedemblik.nl.

For specific assistance in finding your suitable accommodation, you may ask by email: hospitality@2016HansaWorlds.com

27.2 On a short distance from the venue a bungalow park is situated. For information and booking see website www.bungalowparkzuidzee.nl

28 RACE BOAT CHARTERING

28.1 The Organizing Authority is working to arrange a supply of charter boats for this regatta. Additional information will be published on the website www.2016HansaWorlds.com as soon as it becomes available.

28.2 Sailors from the European continent are encourage to bring their own or their local club boats.

28.3 Charter rates are: Hansa 2.3 = 150 Euro, Hansa 303 = 350 Euro, Liberty = 550 Euro. Reservations made on a first come, first serve basis simultaneous with the online registration for the event. Refundable damage deposit per boat is 100 Euro to be paid in cash at registration desk on June 3 or 4.

29 FURTHER INFORMATION

29.1 For more information visit the event website www.2016HansaWorlds.com or www.isc-medemblik.nl

29.2 For specific questions you can also send an e-mail to one of the following e-mail addresses:

- boatcharter@2016HansaWorlds.com
- hospitality@2016HansaWorlds.com
- administration@2016HansaWorlds.com
- enquiries@2016HansaWorlds.com



Route to harbor Regatta Center Medemblik

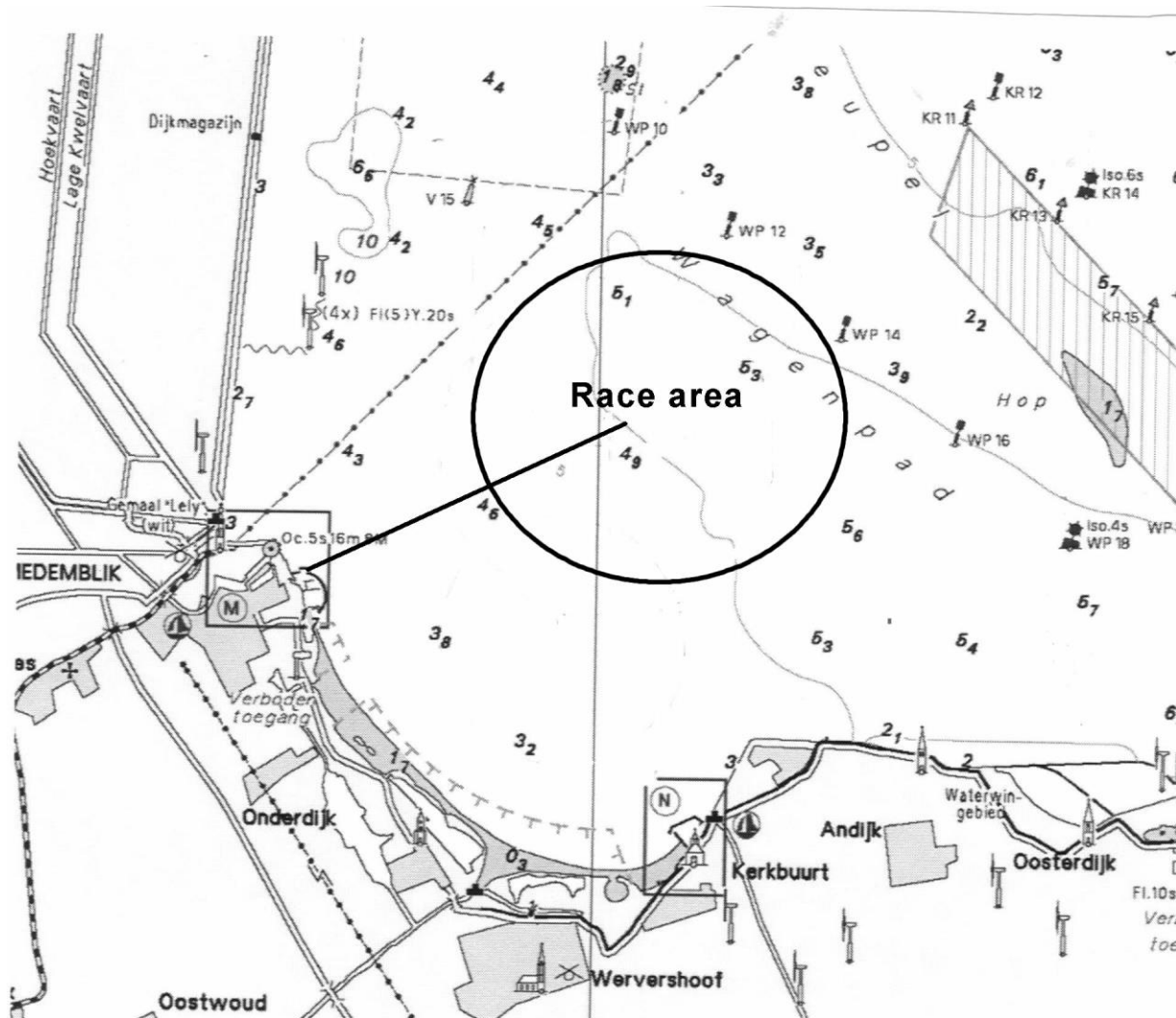
Medemblik is a medieval town, with some very small roads. In order to restrict the traffic inconvenience for the citizen of Medemblik, please start following the road signs to the recreation site "**Voorover**" (later on follow: harbor Regatta Centre Medemblik) *before* entering the town of Medemblik.

APPROXIMATE POSITION RACE AREA

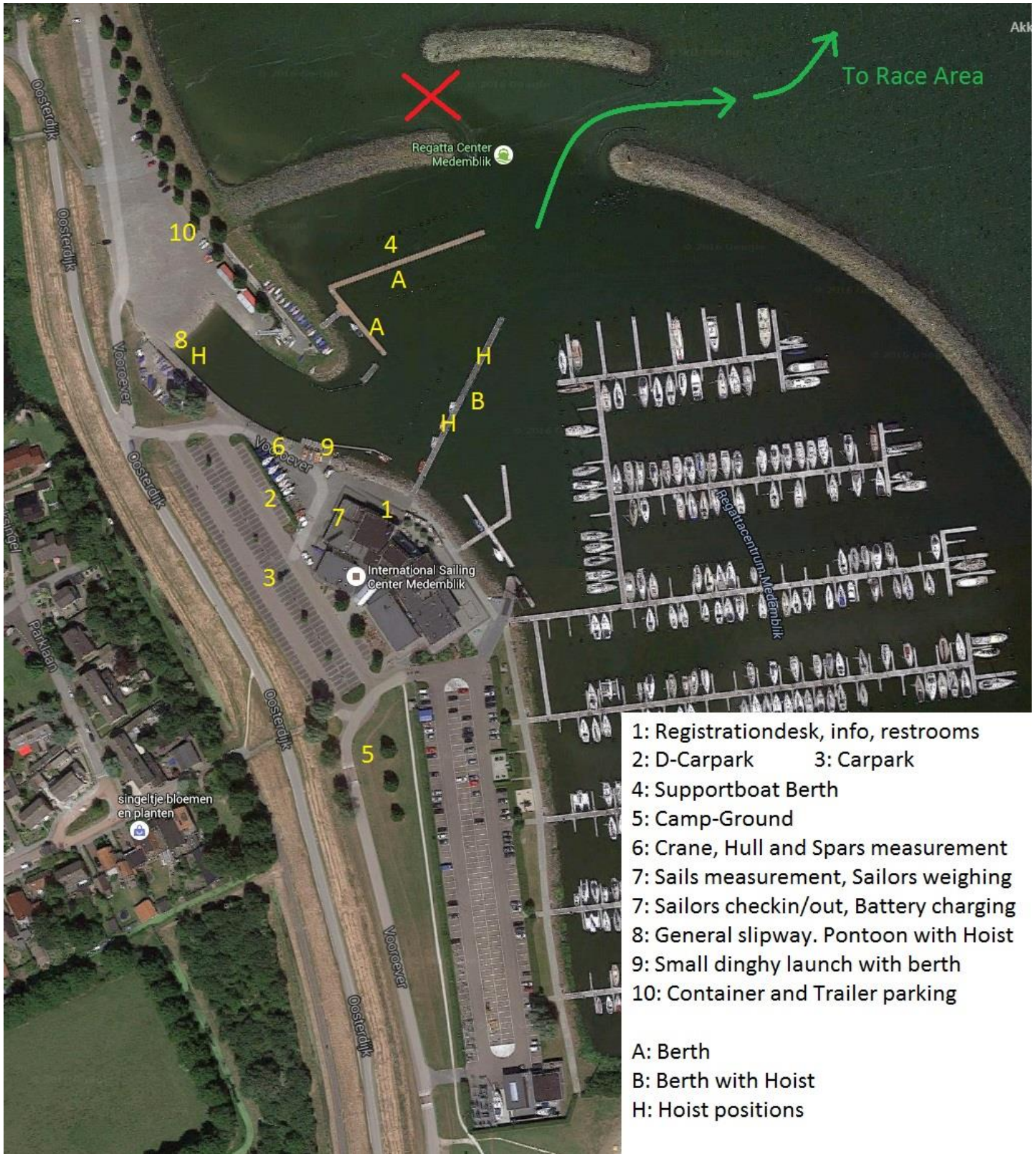
Harbor (Regatta Centre) – Racing Area (midpoint)

Distance: approx. 1,5 NM

Compass bearing: approx. 060°



NOR ATTACHMENT C



- 1: Registrationdesk, info, restrooms
- 2: D-Carpark 3: Carpark
- 4: Supportboat Berth
- 5: Camp-Ground
- 6: Crane, Hull and Spars measurement
- 7: Sails measurement, Sailors weighing
- 7: Sailors checkin/out, Battery charging
- 8: General slipway. Pontoon with Hoist
- 9: Small dinghy launch with berth
- 10: Container and Trailer parking

- A: Berth
- B: Berth with Hoist
- H: Hoist positions